

Eyelash Extensions

Only available at selected Dream Nails Beauty salons.

| | |
|------------------------------|------------------|
| Individual Eyelashes | from R485 |
| Party Eyelashes | from R270 |
| Two Week Fill | from R270 |
| Additional Week Thereafter | R55 |
| Removal with New Application | R130 |
| Removal | R160 |

Other Services

Only available at selected Dream Nails Beauty salons.

| | |
|---------------------------|------------------|
| Piercings | from R100 |
| Bridal Trial Make-up | R200 |
| Bridal Make-up | R450 |
| Special Occasions Make-up | R250 |
| Body Tan Application | R300 |

Home Care

Suggested retail for home care that will assist your nails to last longer.

| | |
|-------------------------------|-------------|
| Nurture Oil (7ml) | R77 |
| Nurture Oil (15ml) | R105 |
| Sani-Pure (59ml) | R93 |
| Airshield (15ml) | R132 |
| Lavender Buffer Block | R33 |
| Endurance File 180/180 | R27 |
| Endurance File 180/240 | R39 |
| Vanish Cuticle Remover (15ml) | R124 |

Purchase your own hygiene pack, which will include your own set of nail files. Available in salon on request.

Our Staff Guarantee:

All our staff has received high standard and quality training; we continue on an on-going basis to train and uplift our nail technicians to ensure that you, our valued customer only receives the best service from our Dream Nails Beauty salons.

Our Superior Warranty:

All NEW Nail Enhancements are guaranteed for two weeks after initial application. Should you experience any service breakdown during this period please return to the Dream Nails Beauty salon where your service was performed.

Our Quality Guarantee:

We use only the best product (NSI) which has been recognised for its superior quality throughout the world, in our salons for all our nail enhancement services; this gives you peace of mind and assurance that you will not experience side effects of any kind when visiting our salons.

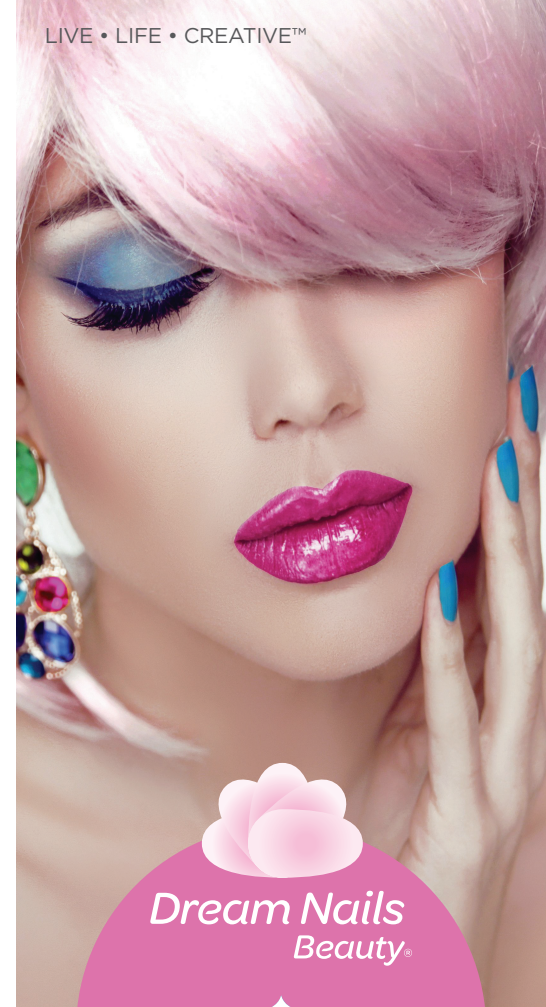
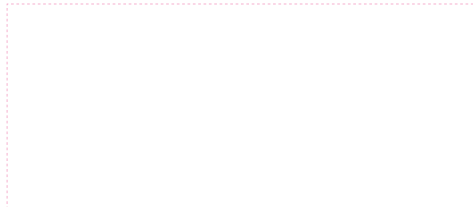


Give the gift of glamour and purchase a Beauty Gift Card!

Have our treatments at your fingertips and download our Dream Nails Beauty Mobile App today.



Our Contact Details



**Dream Nails
Beauty**

Treatment Menu

Hands

NAIL ENHANCEMENTS

TIPS

Give your tips the edge with natural or french Acrylic or Gel enhancements for added length and strength.

| | |
|--|-------------|
| Natural Tips: Acrylic or Gel | R325 |
| French Tips: Acrylic or Gel | R325 |
| Two Colour Application: Acrylic or Gel | R365 |
| Colour/Funky Tips: Acrylic or Gel | R380 |

OVERLAYS

Application onto natural nails only, no extensions.

| | |
|--------------------------------------|-------------|
| Natural Acrylic or Gel Overlay | R290 |
| French/Colour Acrylic or Gel Overlay | R310 |

SCULPTURED

Giving added length and strength for natural nails.

| | |
|--|-------------|
| Natural Sculptured: Acrylic or Gel | R390 |
| Designer Stiletto Tips: Acrylic or Gel | R390 |
| Two Colour Application: Acrylic or Gel | R410 |

NAIL ART

Add extra glam to your nails with dazzling decals, cracked ice, Genuine Swarovski Elements, diamantes or coloured Acrylic/Gel for an eye-catching intricate effect.

| | |
|------------------------------|-----------------|
| Nail Art Basic (per nail) | from R5 |
| Nail Art Designer (per nail) | from R20 |

| | |
|---|-------------|
| Add on: Airshield | R20 |
| Add on: Glaze 'n Go | R40 |
| Add on: Polish Pro (Light Cured Polish) | R140 |
| Add on: French Polish Pro (Light Cured Polish) | R160 |

FILLS/MAINTENANCE

Don't let re-growth come between you and stunning nails.

| | |
|------------------------------------|-------------|
| Two Week Fill | R210 |
| French Back Fill (2 Weeks) | R270 |
| Additional Week Thereafter | R20 |
| New Nail/Toenail Repair (per nail) | R45 |
| Repair with Fill (per nail) | R20 |

REMOVALS: Hands and Feet

| | |
|--|-------------|
| Soak Off with Buff and Polish | R150 |
| Soak Off with New Application | R60 |
| Soak Off with New Polish Pro Application | R40 |

MANICURES

| | |
|-------------------------------------|-------------|
| Manicure (30min without massage) | R145 |
| Dream Manicure (45min with massage) | R175 |
| Gent's Manicure (45min) | R165 |

| | |
|---|-------------|
| Add on: French Polish | R40 |
| Add on: Paraffin Wax | R65 |
| Add on: Polish Pro (Light Cured Polish) | R140 |
| Add on: French Polish Pro (Light Cured Polish) | R160 |

Feet

PEDICURES

| | |
|---|-------------|
| Dream Pedicure (60min) | R210 |
| Gent's Pedicure | R210 |
| Pedicure with Massage Chair (selected salons) | R240 |

| | |
|---|-------------|
| Add on: French Polish | R40 |
| Add on: Polish Pro (Light Cured Polish) | R140 |
| Add on: French Polish Pro (Light Cured Polish) | R160 |
| Add on: Paraffin Wax | R65 |
| Add on: Soft Heels (Ball of Foot) | R30 |
| Add on: Soft Heels (Heel Only) | R75 |
| Add on: Foot Massage (30min) | R120 |

TOE OVERLAYS

| | |
|-----------------------------------|-------------|
| Colour Acrylic or Gel Toe Overlay | R250 |
| French Acrylic or Gel Toe Overlay | R270 |

Nail Polish

| | |
|--|-------------|
| Colour Polish | R55 |
| French Polish | R75 |
| Buff and Polish | R95 |
| Buff and French Polish | R120 |
| Polish Pro (Light Cured Polish) | R195 |
| French Polish Pro (Light Cured Polish) | R215 |

Body Massage

| | |
|---|-------------|
| Back, Neck and Shoulder (30min) | R230 |
| Back, Neck and Shoulder (45min) | R265 |
| Full Body Massage (60min) | R350 |
| Full Body Massage with Soy Candle (60min) | R375 |

Facial Treatments

Only available at selected Dream Nails Beauty salons.

| | |
|--|-------------|
| Essential Facial | R180 |
| Awaken tired, dull skin with our signature anti-ageing facial that moisturises and restores your skin's natural glow. Suitable for all skin types. | |

| | |
|---|-------------|
| Deep Cleanse | R320 |
| First aid for oily, troubled skin, hard working decongestive masks unclog pores and rebalances the skin. Leaving a noticeably clear, bright complexion. | |

| | |
|---|-------------|
| Intensive Hydrating | R295 |
| Emergency rejuvenation of dehydrated, ageing skin with lines and wrinkles. This intensive treatment encourages the regeneration of new healthy hydrated cells for a healthy, youthful skin. | |

| | |
|--|--|
| Active Resurfacing Peel Treatment | |
| The gentler alternative to harsh chemical peels. This therapeutic treatment will resurface and restore your skin's glow, with minimal visible peeling. | |

| | |
|---|-------------|
| Active Resurfacing 20% application | R415 |
|---|-------------|

| | |
|---|-------------|
| Active Resurfacing 25% application | R445 |
|---|-------------|

Waxing

Suitable even for the most delicate skins. Please inform the therapist if you are taking any medication.

| | | | |
|-----------------------------|-------------|-------------------|-------------|
| Lip | R60 | Full Legs (women) | R225 |
| Chin | R65 | Full Legs (men) | R270 |
| Brow Shape | R65 | Underarms | R95 |
| Sideburns | R110 | ½ Arms | R85 |
| Full Face (excluding brows) | R130 | Full Arms | R120 |
| Bikini (women only) | R120 | ½ Back | R175 |
| Brazilian (women only) | R185 | Full Back | R225 |
| Hollywood (women only) | R240 | Chest | R175 |
| ½ Legs | R155 | Stomach | R85 |
| ¾ Legs | R180 | Stomach Line | R45 |

Tinting & Shaping

| | |
|---------------------|-------------|
| Brow Tint | R60 |
| Lash Tint | R70 |
| Brow and Lash Tint | R120 |
| Brow Shape and Tint | R120 |